

# Pressure switch with changeover switch

## Type 903/953



### PRODUKTSPEZIFIKATION

The KANT pressure switch 903/953 has an integrated electrical changeover switch. A membrane is deformed by the applied pressure or a piston is displaced via a stroke movement. The intensity of the deformation or movement depends on an adjustable spring preload. When a specific pressure value is reached, the integrated electrical switch closes one circuit and opens another.



### ► TECHNICAL DATA SPECIFICATION

SWITCHING ELEMENT 90903/953	Changeover switch	MAX. CURRENT	3Amp
REPRODUCIBILITY	~ 2-5%	MAX. VOLTAGE	48V/250V
HYSTERESIS	~ 20-30%*	PROTECTION CLASS	IP63
SWITCHING FREQUENCY	200/min	WEIGHT	0,17 kg
TEMPERATURE RANGE	-20 bis +85°C	THREAD	G 1/4"

\*smaller on request

### ► ORDERING-CODE

	SETTING RANGE	OVERPRESSURE SAFETY	ORDERING CODE	ORDERING CODE
	(bar)		250V	48V
MEMBRANE	1-10	300	903-10-215	953-10-215

Further Setting Ranges on request

## ► EXPLANATION ORDERING CODE

THREAD	A
G 1/4 female	2

HOUSING MATERIAL	C
Aluminium	5
INOX	2*

SEALING ELEMENT		B	INFORMATIONS
Membrane	NBR	1	Hydraulic fluid, machine oil, fuel oil, nitrogen, sea water, compressed air
	FKM (VITON)	2	Gasoline, alcohol, hydrochloric acid, sulphuric acid, hydraulic fluids
	EPDM (APTK)	3	Hot water, hydrogen, break fluid, acetylene etc.
	Silicone	4	Food, water etc.
Piston	Slip ring	8	Oil
	Slip ring	9	Hot water

SPECIAL TYPE	D
Device plug DIN EN 175301-803 A	-
Flange connection	2
Device plug DIN EN 175301-803 A, LED, 24 V	3

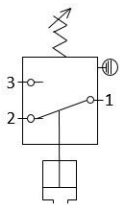
\* on request

The functions „Open“, „Close“ or „Change“ relate to increasing pressure.

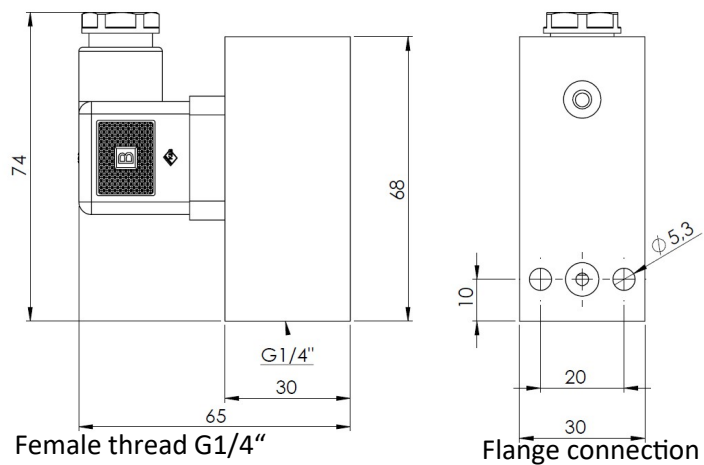
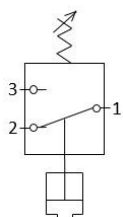
## ► CIRCUIT DIAGRAM

## ► DIMENSIONS

903



953



## ► ACCESSORIES



Device plug DIN EN 175301-803 A



Device plug DIN EN 175301-803 A, LED, 24 V

Subject to technical changes.

Kant Druckschalter GmbH; [www.kant-druckschalter.de](http://www.kant-druckschalter.de)